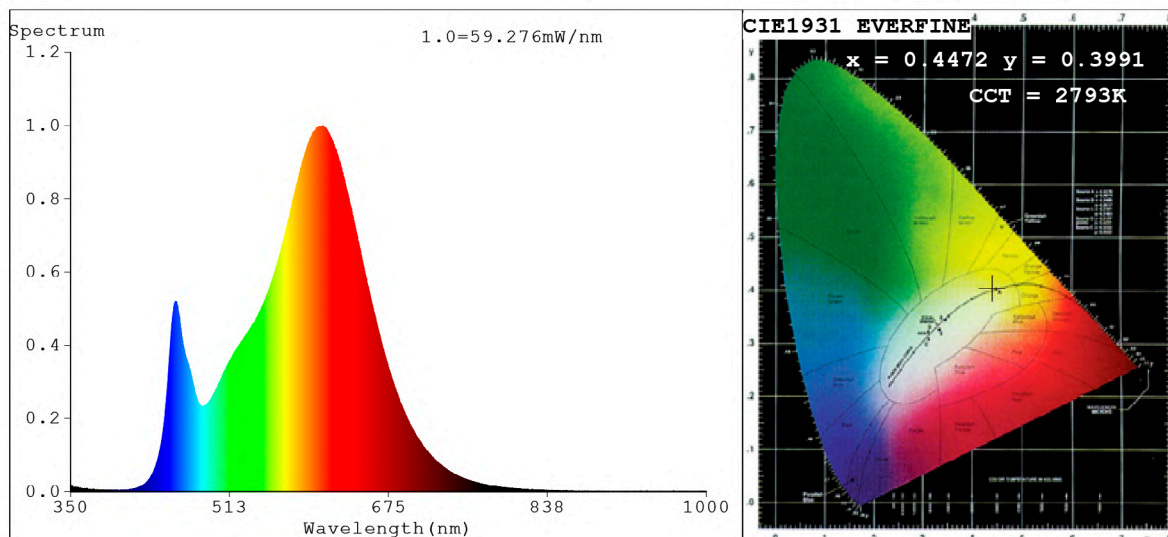


Spectrum Test Report



Color Parameters:

Chromaticity Coordinate: $x=0.4472$ $y=0.3991$ $u'=0.2595$ $v'=0.5210$
 CCT=2793K (Duv=-0.0032) Dominant WL:Ld =584.9nm Purity=54.0%
 Ratio:R=24.8% G=72.2% B=2.9%;;Peak WL:Lp=608.1nm FWHM=114.3nm
 Render Index:Ra=83.2 CRI=79.3 TM30:Rf=82 Rg=95
 R1 =84 R2 =96 R3 =90 R4 =79 R5 =84 R6 =95 R7 =79
 R8 =58 R9 =13 R10=91 R11=79 R12=78 R13=87 R14=96 R15=76

Photo Parameters:

Flux = 2709 lm Eff. : 131.84 lm/W Fe = 8.595 W Scotopic:3598.9 S/P:1.3286

Electrical parameters:

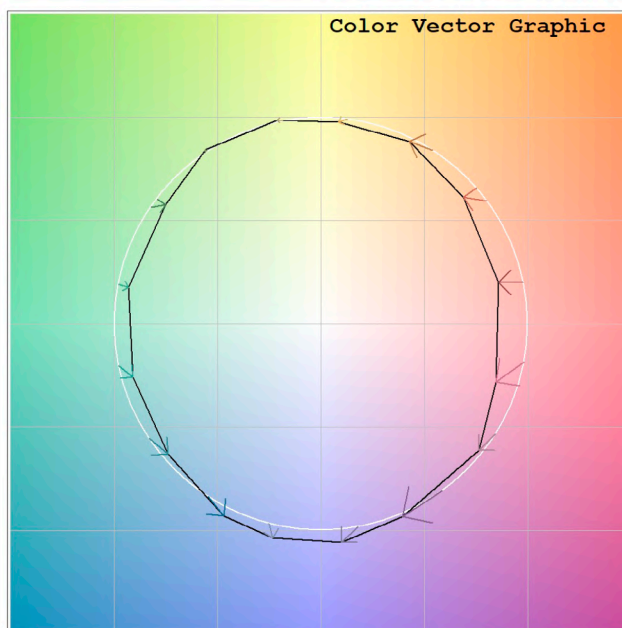
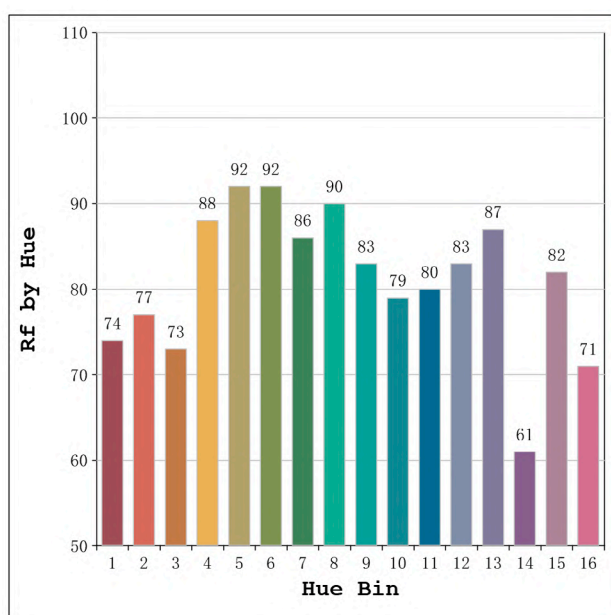
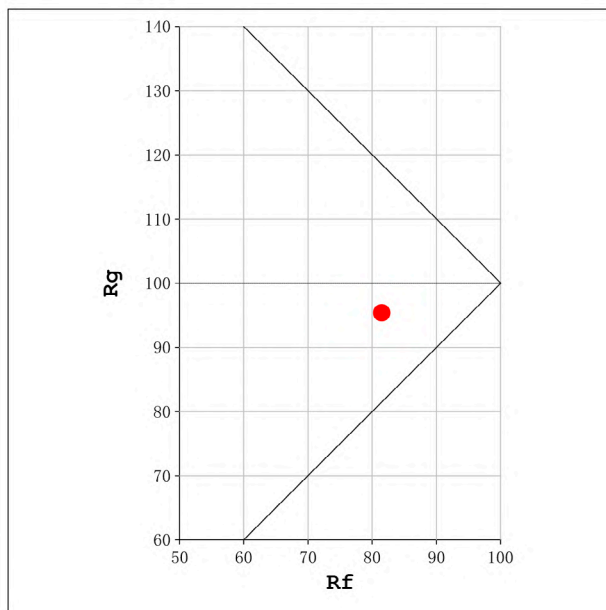
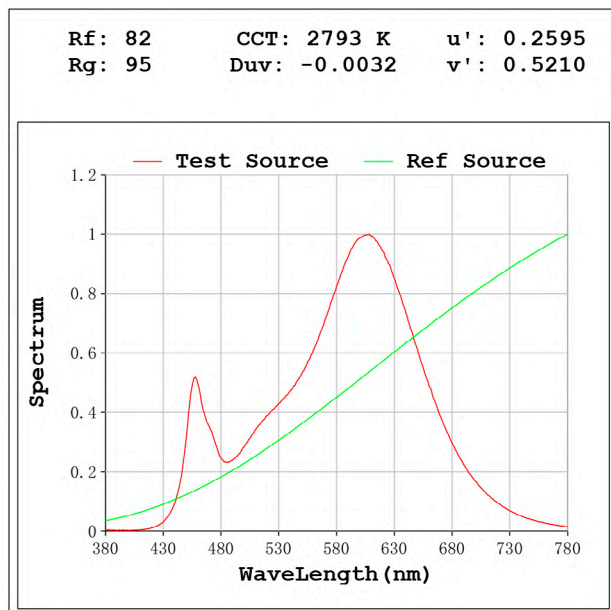
V = 23.998 V I = 0.8561 A P = 20.54 W PF = 1.000

WHITE:ANSI_2700K

Status: Integral T = 428 ms Ip = 51300 (78%)

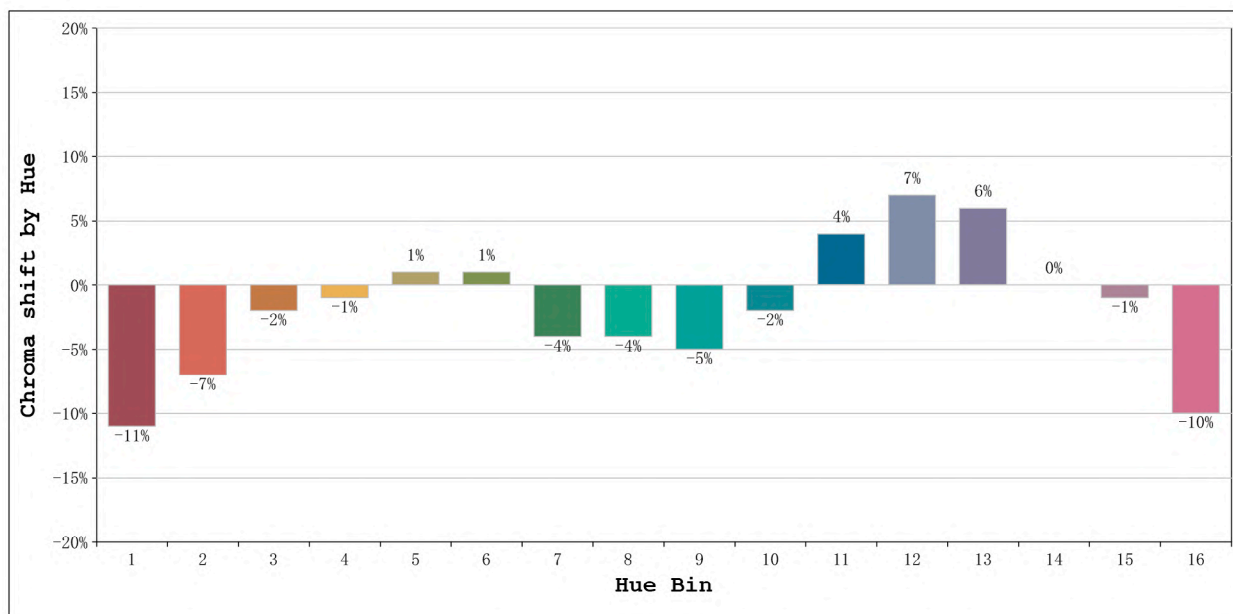
Model:Ecoled Granda 2700K
 Tester:Sergio Carneros
 Temperature:28Deg
 Manufacturer:Luz Negra S.L

Number: 33.029
 Date:25-5-2021
 Humidity:57%
 Remarks:100cm de tira flexible



Model:Ecoled Granda 2700K
 Tester:Sergio Carneros
 Temperature:28Deg
 Manufacturer:Luz Negra S.L

Number: 33.029
 Date:25-5-2021
 Humidity:57%
 Remarks:100cm de tira flexible



			Graphic shift(%)	
Hue Bin	Hue Angle	Rf	Chroma	Hue
1	0.0° - 22.5°	74	-11	2
2	22.5° - 45.0°	77	-7	8
3	45.0° - 67.5°	73	-2	12
4	67.5° - 90.0°	88	-1	4
5	90.0° - 112.5°	92	1	3
6	112.5° - 135.0°	92	1	0
7	135.0° - 157.5°	86	-4	-4
8	157.5° - 180.0°	90	-4	0
9	180.0° - 202.5°	83	-5	7
10	202.5° - 225.0°	79	-2	11
11	225.0° - 247.5°	80	4	12
12	247.5° - 270.0°	83	7	3
13	270.0° - 292.5°	87	6	-8
14	292.5° - 315.0°	61	0	-22
15	315.0° - 337.5°	82	-1	-10
16	337.5° - 360.0°	71	-10	-11

Model:Ecoled Granda 2700K
 Tester:Sergio Carneros
 Temperature:28Deg
 Manufacturer:Luz Negra S.L

Number: 33.029
 Date:25-5-2021
 Humidity:57%
 Remarks:100cm de tira flexible